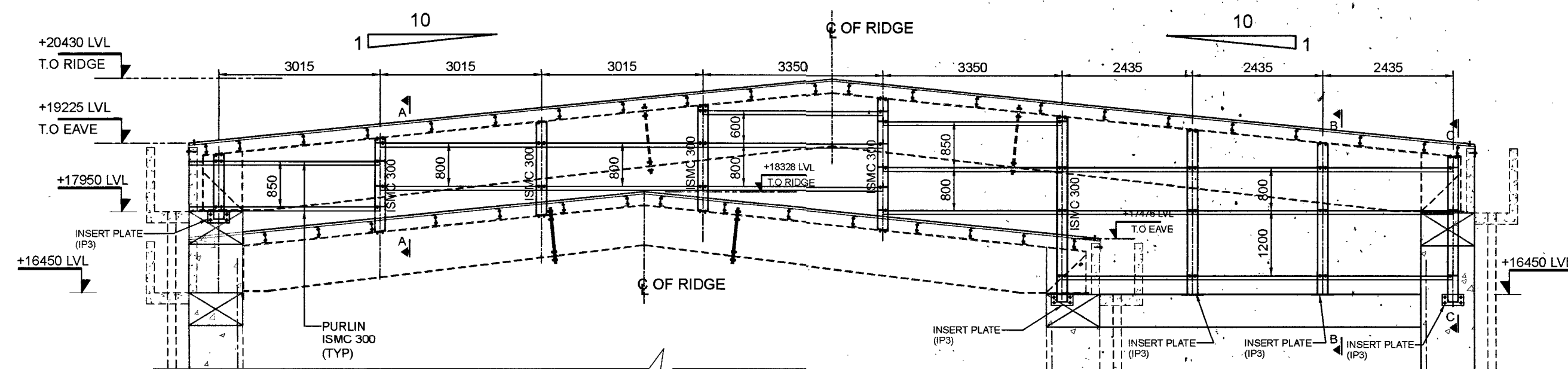
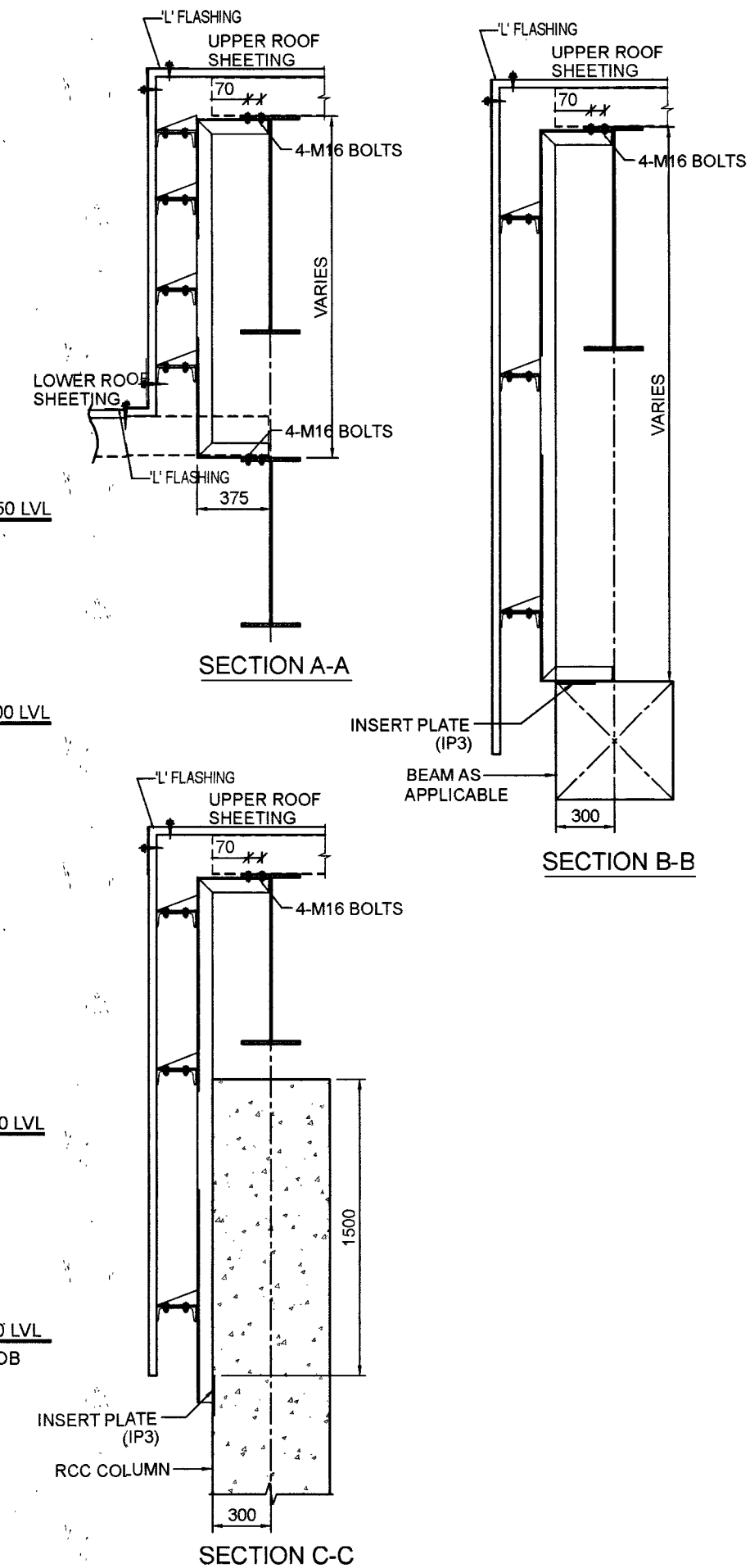


SECTION -C  
ELEVATION ALONG GRID 6



END WALL FRAMING  
ELEVATION ALONG GRID 6



#### NOTES

1. ALL DIMENSIONS AND LEVELS GIVEN ARE IN MILLIMETERS UNLESS OTHERWISE SPECIFIED.
2. FIGURED DIMENSIONS ONLY SHALL BE FOLLOWED.
3. BOB= BOTTOM OF BEAM  
TOB= TOP OF BEAM

DATE	DESCRIPTION	SIGN
REVISIONS		

#### VETTED BY

ALL DETAILS HAVE BEEN THOROUGHLY CHECKED AND ARE IN COMPLIANCE TO STANDARDS, CODES, REGULATIONS IN RESPECT OF SAFETY, SOUNDNESS AND ECONOMY.

PROVN OF HANGAR AND  
ANNEXE BUILDING AT  
INS DEGA VISAKHAPATNAM

#### ELEVATION ALONG GRID 6

SHT NO.	S18	<b>HELIOS ENGINEERING CONSULTANTS</b> #38-34-66 FCI COLONY MARRIPALEM VISAKHAPATNAM - 530018
PRO NO.	ST2204	
SCALE.	AS NOTED	
DRN BY.	KSS	
DATE.	28-02-2023	

DESIGNED BY

DV TRINADH RAO

CHECKED BY

S SURYA  
MS (STRUCTURES)

**CHIEF ENGINEER  
(NAVY)  
VISAKHAPATNAM**

REF.DRG.NO : CEVZ/2022/WD-2120(S) Sht.No. 18/40

DESIGNS & DRAWINGS PREPARED UNDER CONSULTANCY FROM M/S HELIOS ENGINEERING CONSULTANTS AND VETTED BY ANDHRA UNIVERSITY

Kenshi Raman  
Lt Col  
SO 1 (Design)  
for Chief Engineer

Sriivas Nalla, IAS  
CE (NF)  
Director (Design)  
for Chief Engineer